

Medical and Educational Academy

“How To” *In 60 Seconds!*



Complete and Submit a
course application form



Inspired by



[Welcome](#)

[Studying With Us](#)

[Courses](#)

[Where To Study](#)

[Blog](#)

[FAQ](#)

[Contact](#)

WELCOME TO THE SCHOOL OF SONOGRAPHY

Medical and Educational Academy

[COURSES](#)

[GET IN TOUCH](#)

Go to our website- www.meded-academy.com

[Chat](#)



Inspired by



[Welcome](#)

[Studying With Us](#)

[Courses](#)

[Where To Study](#)

[Blog](#)



[Contact](#)

WELCOME TO THE SCHOOL OF SONOGRAPHY

Medical and Educational Academy

[COURSES](#)

[GET IN TOUCH](#)

Click 'Members Login'

[Chat](#)



Inspired by



Login here to access and edit your membership profile, apply for our courses and review supporting documents

MEMBERS' LOGIN

Username or Email *

Password *

Can't remember your password? [Click here](#) to reset.

Login

PAYMENT METHODS

We accept payments by Bank transfer or with any of the following cards



Enter username and password details

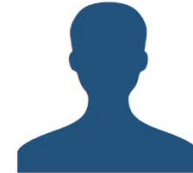
WELCOME TO YOUR PERSONAL PAGE



Apply For A Course



Guidance Notes/Files



Edit My Profile



Click 'Apply For A Course'

[Explore Our Courses and Products](#)

[Safely Log Out](#)

APPLICATION FORM

Page 1

Page 2

Page 3

Page 4

Page 5

Page 6

Page 7

Page 8

Page 9

GENERAL INFORMATION

As you complete your on-line application, we will require you to submit the following information:

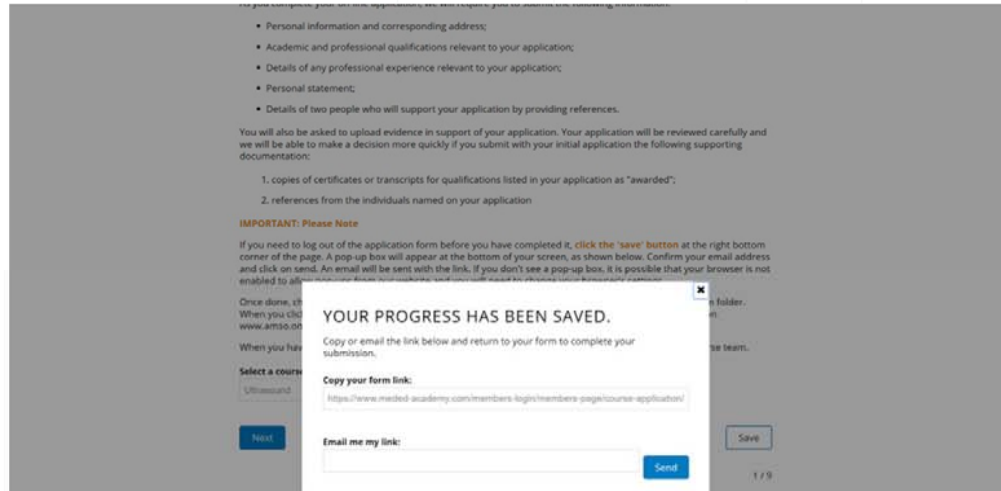
- Personal information and corresponding address;
- Academic and professional qualifications relevant to your application;
- Details of any professional experience relevant to your application;
- Personal statement;
- Details of two people who will support your application by providing references.

You will also be asked to upload evidence in support of your application. Your application will be reviewed carefully and we will be able to make a decision more quickly if you submit with your initial application the following supporting documentation:

Read Page 1 carefully, this information will help you complete your application form.

enabled to allow pop-ups from our website and you will need to change your browser's settings.

 Chat



Select your course from the dropdown menu, Click 'Next' to continue.

Once done, check your emails immediately to ensure receipt of the link. If you don't see it, check your spam folder. When you click on the link later it will take you straight to your application form without the need to login on www.amso.online portal.

When you have completed your on-line application you will need to submit it for consideration by the Course team.

Select a course from the dropdown menu *

Ultrasound

Next

Save



Chat



PERSONAL DETAILS

Title * **Name ***

Previous Surname **Known as**

Nationality *

Second or Dual Nationality

Country of Birth *

Fill in all personal details on Page 2

For all applicants, please upload a scanned copy of your photo ID or Passport with your photo identification and details *





Country of Residence *

For all applicants, please upload a scanned copy of your photo ID or Passport with your photo identification and details *

or drag files here.



Address (UK or non-UK) *

Be sure to upload a copy of your photo ID, click 'Next' when this section is completed.





ENGLISH LANGUAGE COMPETENCY

Please select a qualification that best suits your English language proficiency.

If you require any further help please read the 'Applicant Guidance' notes by clicking the button on the right hand side. If you still have a query please contact us at; admin@amso.online and our team will be happy to assist you.

If you are a UK resident:

1. If you have been in education in the previous three years and have completed, or are due to complete, a qualification that is taught in English, please select 'Other Taught in English Language' and give the details.
2. If you have not been in education in the previous three years, but have been using English in a professional employment role, please select 'Professional Experience/Skills' and give the details.
3. If you are due to complete or have completed your GCSE English language in the previous three years, please select 'GCSE' and give the details.

If you are not a UK resident

1. If you are due to sit a Secure English Language Test (IELTS for UK Visas and Immigration /Trinity ISE), or have sat one of these tests in the previous two years, please select 'Secure English Language Test' and provide the details.
2. If you are due to sit another English Language test such as Academic IELTS, TOEFL or Pearson's Test of English, or have sat any of these English Language tests in the previous two years, please select 'Non-SELT English Language tests' and provide the details.
3. If you are due to complete or have completed your GCSE English language in the previous three years, please select 'GCSE' and give the details.
4. If you are due to sit, or have sat another English Language Examination such as IGCSE or International Baccalaureate in the previous two years, please select 'Other English Language Test' and provide the details.
5. If you have sat examinations in English in your home country in the previous three years, please select 'Other Taught in English' and give the details.

Read the information carefully before making your selection.



...circumstances in the previous two years, please select 'Other English Language Test' and provide the details.

- 5. If you have sat examinations in English in your home country in the previous three years, please select 'Other Taught in English' and give the details.
- 6. If you have not been in education in the previous two years but have been using English in a professional employment role, please select 'Professional Experience/Skills' and give the details.
- 7. If none of the above circumstances apply to you, please give details of your most recent English Language qualification or experience.

Please select the type of English language proficiency *

Dropdown menu with 'Untitled' selected and 'First Choice' as an option.

PROFESSIONAL EXPERIENCE/SKILLS

Please provide information relating to your English language skills gained through professional experience. *

Large empty text area for providing professional experience details.

DOCUMENT UPLOAD FACILITY

Upload button or drag files here.

If you are using professional experience/skills to demonstrate your English language proficiency you will need to upload evidence from your employer. You can download an 'Employer English Language Referee Report' form by clicking the button on the right hand side and follow the instructions.

Once selected, remember to upload your files. Click 'Next' when this section is completed.





ACADEMIC AND PROFESSIONAL QUALIFICATIONS

QUALIFICATIONS

This section covers both academic and professional qualifications. You can add up to 8 relevant qualifications to support your application, with each qualification providing you with a facility to upload any supporting documentation.

✕ QUALIFICATION 1

Qualification Name and Subject *

Awarding Body/Institution *

Classification/Grade *

Award Date

Start of Study Period (MM/YYYY) *

End of Study Period (MM/YYYY) *

Fill out the qualification sections on Page 4





Classification/Grade *	Award Date
<input type="text"/>	<input type="text"/>
Start of Study Period (MM/YYYY) *	End of Study Period (MM/YYYY) *
<input type="text"/>	<input type="text"/>
<i>e.g. 09/2004</i>	<i>e.g. 07/2009</i>
Country *	
<input type="text"/>	
Awarded or Pending *	
<input type="text"/>	
DOCUMENT UPLOAD FACILITY	
<input type="button" value="Upload"/> or drag files here.	
<i>Please upload any documentation to support the achievement of this qualification, e.g. your final certificate and/or transcripts.</i>	



[+ Add Qualification](#)

You can add further qualifications by clicking 'Add Qualifications'. Once complete, click 'Next'



PROFESSIONAL EXPERIENCE

Position Held *

Nature of Work *

Start date *



End date



Employer Details *

Complete the required professional experience sections. Remember to upload your documents.

DOCUMENT UPLOAD FACILITY



or drag files here.

Please upload any documentation to support the achievement of this qualification





Upload or drag files here.

Please upload any documentation to support the achievement of this qualification

MEMBERSHIP OF PROFESSIONAL INSTITUTIONS/BODIES

PROFESSIONAL INSTITUTION/BODY 1

Name of Professional Institution *

Level of Membership

Joining date



Expiry date (if applicable)



Registration Number

You can add a further 'Professional Institution'
By clicking the tab. Once complete, click 'Next'

+ Add Professional Institution/Body

Back

Next

Save





PERSONAL STATEMENT

In the Personal Statement, please provide information that is relevant to your application for admission e.g. why do you wish to follow this programme? What benefits do you expect to gain from it? What skills and experience do you possess which make you a suitable applicant?

Please note that your personal statement should be no longer than 500 words. There is no spell-checker facility in the software. Alternatively, you may upload a word or PDF document but must not send your personal statement to us separately by email. If you do this, your application will not be considered.

Personal Statement *

DOCUMENT UPLOAD FACILITY

or drag files here.

Please upload any supporting documentation

Other Information

Add your 'Personal Statement' on Page 6.
Alternatively, you can upload it in an existing document





which make you a suitable applicant?

Please note that your personal statement should be no longer than 500 words. There is no spell-checker facility in the software. Alternatively, you may upload a word or PDF document but must not send your personal statement to us separately by email. If you do this, your application will not be considered.

Personal Statement *

DOCUMENT UPLOAD FACILITY

or drag files here.

Please upload any supporting documentation

Other Information

Please provide any additional information that is relevant to the application in the field above (up to 500 words) and/or upload supporting documentation through the facility below.

Once complete, click 'Next' to continue

Please upload any supporting documentation





CONFIDENTIAL REFERENCES

Two people who have knowledge of your academic or professional ability must support your application by providing references. If you are currently a student or have recently completed your studies, at least one of your referees must be a lecturer or professor from your university. We will not accept references from family members.

Please confirm with your referees their agreement to give you a reference. We will send each of them a copy of the form. Your referees may also produce typewritten letters, but these must be on an institutional headed paper and include your full name, online application reference number and the name of the course you are undertaking. Your referees should send us the completed forms directly.

Your application cannot be considered until we receive both references.

1ST REFEREE

Name *

Address *

Add details of two appropriate referees

Email *

Phone *



Address *

Email *

Phone *

Knowledge of applicant *

DOCUMENT UPLOAD FACILITY

Once complete, click 'Next' to continue

[Back](#) [Next](#)

[Save](#)





APPLICATION FORM

- [Page 1](#)
- [Page 2](#)
- [Page 3](#)
- [Page 4](#)
- [Page 5](#)
- [Page 6](#)
- [Page 7](#)
- [Page 8](#)**
- [Page 9](#)

FUNDING

Completing this section does not constitute a binding agreement and will not affect your application.

We are committed to promoting equality and diversity in all of our practices and activities, including those relating to student recruitment, selection and admission. Please refer to our 'Equal Opportunities policy'.

How do you intend to pay your Course fees? *



NON UK/EU APPLICANTS CURRENTLY IN THE UNITED KINGDOM

Do you have a visa that gives you permission to live and/or work in the UK with or without time limit restrictions?



Please upload scanned copies of Home Office correspondence and copies of relevant pages of your passport to us, as evidence that you have a visa which gives you permission to live and/or work in the UK with or without time restrictions.

Complete this section by selecting from the drop down menus. Once complete, click 'Next'.



You have almost completed your online application.

If you are ready to submit your application form for consideration, please select the 'submit' button.

If you are not ready to submit your application form, for example because you want to add further information or upload relevant documents, click the 'save' button at the bottom of the page and complete your application later. You will need to follow the instructions in the pop-up box so that we can send you a link to your email address. You can log

Please read the 'Declaration' carefully. Tick the boxes to agree to the statement.

DECLARATION

I confirm that, to the best of my knowledge, the information provided in this form is factually accurate and that no requested information or any additional information relevant to this application has been omitted.

Please tick box to agree

It is a condition of acceptance of your application that the applicant consents to personal information, obtained by us in connection with the admission process, being retained for a specified period. In so doing, the applicant accepts that such information may be used and shared with other relevant bodies for the purposes of verifying the identity, qualifications or references of the applicant.

Where it is legitimate and necessary we may process applicants' personal data without their consent, for example by sharing information with UK agencies with duties relating to the prevention and detection of crime, apprehension and prosecution of offenders, collection of a tax or duty, or safeguarding national security. This may include Benefit or Tax Inspectors, the Police, the Home Office Immigration and Nationality Directorate and the Foreign and Commonwealth Office.

I have read and agree with the above statement:





You have almost completed your online application.

If you are ready to submit your application form for consideration, please select the 'submit' button.

If you are not ready to submit your application form, for example because you want to add further information or upload relevant documents, click the 'save' button at the bottom of the page and complete your application later. You will need to follow the instructions in the pop-up box so that we can send you a link to your email address. You can log in later to finalise your application.

SOURCE OF INFORMATION

How did you learn about our courses?

DECLARATION

I confirm that, to the best of my knowledge, the information provided in this form is factually accurate and that no requested information or any additional information relevant to this application has been omitted.

Please tick box to agree

It is a condition of acceptance of your application that the applicant consents to personal information, obtained by us in

If you are satisfied with your application, click 'Submit'. Check your emails for your receipt and save.

I have read and agree with the above statement.

[Back](#) [Submit](#)

[Save](#)

[Chat](#)

What Happens Next?

1. You will receive confirmation that your application has been received by US
2. We will receive notification of your submission
3. Faculty will review your application
4. We may ask you for more documents/references
5. We will contact you with the outcome decision and agree with you the courses you will be admitted to, and how to pay online.

Medical and Educational Academy

Thank you for watching!

